



## DNA from Saliva

EASY • PAINLESS • PROVEN

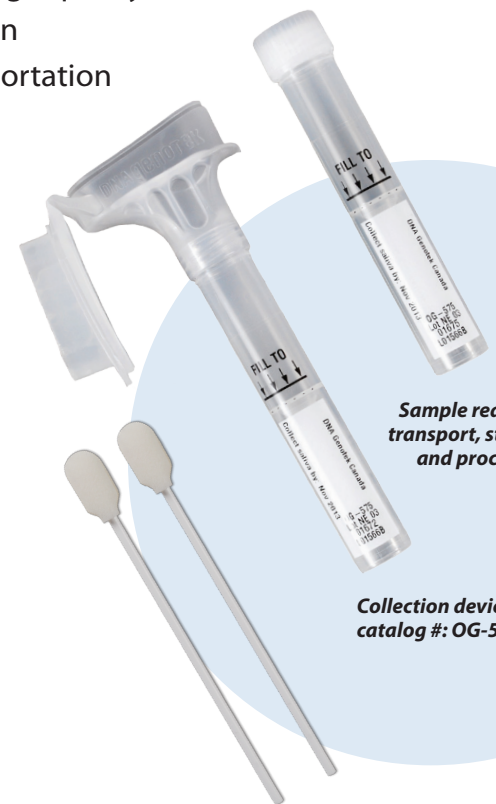
### Collect superior samples for your genetic analysis

Are you looking for a non-invasive way to collect DNA from patients that cannot or choose not to comply with blood collections? DNA Genotek has developed a product for collecting high quantity and high quality DNA from saliva using absorbent sponges. This method is an all-in-one system for the collection, stabilization and transportation of DNA from saliva.

- **Easy collection, transportation and processing**
- **Painless, non-invasive collection of high quality, high quantity DNA**
- **DNA is stable for years at room temperature**
- **Proven on downstream applications**
- **Standardized format for automated processing**

#### ORAgene<sup>®</sup>DNA is superior to buccal swabs

- Higher DNA yield and quality
- More reliable for downstream applications, including complex arrays
- Lower bacterial content
- Sample is stabilized for long-term storage at room temperature



*Sample ready for transport, storage and processing*

*Collection device catalog #: OG-575*

**For more information contact [info@dnagenotek.com](mailto:info@dnagenotek.com)**

**For In Vitro Diagnostic Use**

**For assisted collection of human DNA**

DNA Genotek Inc.  
3000 - 500 Palladium Drive  
Ottawa, ON, Canada K2V 1C2  
Subsidiary of OraSure Technologies, Inc.

Toll-free (North America): 1.866.813.6354  
Tel.: +1.613.723.5757 • Fax: +1.613.723.5057  
[www.dnagenotek.com](http://www.dnagenotek.com)  
[info@dnagenotek.com](mailto:info@dnagenotek.com)

**DNAgenOTEK**



## Benefits

- Non-invasive, reliable collection that increases compliance and decreases costs
- Eliminate phlebotomy costs and requirement for a clinic/hospital setting
- DNA from saliva is equivalent to DNA from blood for downstream applications
- Ideal for use with children or donors that are not able to spit
- Sample remains stable for years at room temperature, reducing transportation and storage costs
- Sample can be mailed using the standard postal system
- Increase efficiency, minimize sample handling and reduce handling errors with a compatible format for high-throughput processing

## Collection method comparison

Attributes	Collection Method			
	Blood collection	Oral collection		
	Venous blood	Mouthwash	Buccal swabs	Oragene-DNA (OG-575)
Non-invasive collection	✗	✗	✓	✓
Specimen stability at room temperature	Days	Weeks	Days	Years
Low bacterial content	✓	✗ <sup>†</sup> (up to 60% bacterial content)	✗ <sup>†</sup> (up to 90% bacterial content)	✓ (median 6.8% bacterial content)
Median DNA yield	30 µg	35 µg	2 µg	17.3 µg <sup>‡</sup>
Sample size	1 mL	10 mL <sup>**</sup>	1 swab	0.75 mL
Molecular weight	>23 kb	> 23 kb	< 23 kb	>23 kb <sup>‡</sup>
Shipping at ambient temperature	✗	✓	✓	✓
Ideal for non-compliant donors	✗	✗	✗	✓

<sup>†</sup> Birnboim, H.C., Iwasiow, R.M. and James, C.M.P. (2008). Human genomic DNA content of saliva samples collected with the Oragene® self-collection kit. DNA Genotek. PD-WP-011.

<sup>‡</sup> Niles, J.O., Rabuka, S., and Iwasiow, R.M. (2010). Non-invasive, assisted collection of high quantity and quality genomic DNA from saliva of young children. DNA Genotek. PD-WP-018.

<sup>\*\*</sup> Volume of mouthwash used for sample collection.

## Kit contents



### Product specifications

#### Pre-use with packaging:

Dimensions: 14.0 x 8.0 x 2.8 cm  
 Sample volume: 0.75 mL using enclosed sponges  
 Weight: 39 g  
 Shelf-life: 30 months

#### Post sample collection specifications

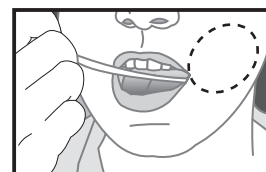
##### Standard false bottom tube:

Tube diameter: 16 mm  
 Tube height (without cap): 93 mm  
 Sample stability: Years

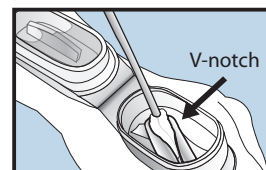
Oragene®DNA is not available for sale in the United States.  
 Some DNA Genotek products may not be available in all geographic regions.

®Oragene is a registered trademark of DNA Genotek Inc. All other brands and names contained herein are the property of their respective owners.  
 Patent (www.dnagenotek.com/legalnotices)

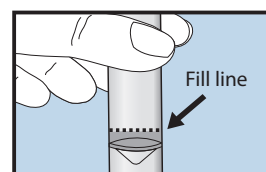
## Easy collection



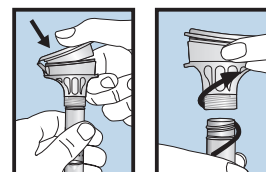
Place and move sponge in cheek pouch along the gums and inner cheeks to soak up as much saliva as possible.



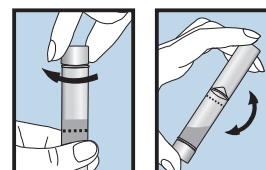
Insert saturated sponge in V-notch of funnel and wring saliva out against the inner wall of the V-notch. Saliva will flow into tube.



Repeat collection steps until the saliva reaches fill line.



Close lid tightly by firmly pushing down until you hear a loud click. Unscrew the funnel from the tube.



Close tube tightly with small cap. Shake for 5 seconds.